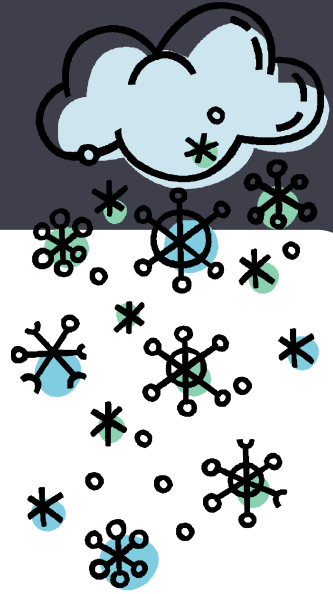


Rocky Mountain Deaf School

December 2011



IMPORTANT DATES

- **December 6**
Colorado Gives Day
- **Avery Brewery
Fundraiser**
- **December 8-9**
Holiday Store
- **Dec 14**
Winter Play
- **Dec 15**
Early Years Program
- **Dec 19-Jan 2**
Winter Break
- **Jan 3**
Return to School

Notes From the Director

As we wrap up the final couple of weeks of the fall semester, we reflect on a very successful start to the school year.

We look forward to an exciting spring semester with rigorous academics, afterschool and athletic programs and our annual spring play.

The building team is moving forward with securing property for our new school.

We are still planning to open the new school in the fall of 2013. Look for more information early next semester for family and community meetings.

We wish you and your family a very happy holiday season!



WINTER PLAY

This year's Winter Play will be on **Wednesday December 14th at 6:00pm.**

Join us for our annual event when students enter the wonderful world of theater and performance with a holiday theme. The spotlight is on your student!

Sweet Treats will be provided by the RMDS Board.

WHERE: Wheat Ridge High School
9505 W 32nd Ave

Upcoming Dates

Jan 2

No School

Jan 16

No School

MLK Day

Jan 20

Elementary Bug's

Life Assembly

Jan 25

Early Release

Jan 27

RMDS Board Meeting

February 6-10

Book Fair

Feb. 15-16

3rd grade TCAP

Feb. 17-20

Mid-Winter Break

RMDS Board Members 2011-2012

Rocky Mountain Deaf School has several new board members. Here is an updated list of the board members:

Ryan Commerson, Deaf Community Rep—President

Lee Germundson, Deaf Community Rep.—Vice President

Kathy Sevier, Parent Rep.—Treasurer

Kevin Souhrada, Parent Rep

Jodie Adams, Education Rep

Gragg White, Business Rep

Eileen Kratzer, Staff Rep— Secretary

Mary Cregan, Staff Rep.

WINTER MIDDLE AND HIGH SCHOOL SPORTS

BASKETBALL

JANUARY 17-MARCH 8



This sports program is open to ALL deaf and hard of hearing students in the Denver Metro area! Practices are held on Mondays and Tuesdays for both boy's and girl's teams. The girl's team will have games on Mondays and Wednesdays and the boy's team will have games on Tuesdays and Thursdays. Games will be played against other Jeffco Schools! Keep an eye out for registration information.

RMDS has a PTO!

RMDS is thrilled to have a Parent Teacher Organization up and running this year. The PTO has had great turn-out and participation from parents.

So far the PTO has supported the school in a number of different ways. They hosted the Fall Festival at the end of October, and this event was

very successful and fun for families and community members. The PTO also provided dinner for teachers who stayed at school all day for Parent-Teacher Conferences in October.

Currently the PTO is planning upcoming fundraisers and Teacher Appreciation week.

RMDS is grateful to those involved and committed parents who keep our community strong and support the education of our fabulous students.

If you would like to get involved, contact Jennifer White at : jenniferjwhite@comcast.net

Early Years Program



The Early Years Program provides a place for families to come together to build relationships with other families, adults who are Deaf / Hard of Hearing, and professionals. The Early Years Parent Group provides support to families and creates networking opportunities within their community.

Thursday, Dec 15th 5:30-7:30

Winter Closures

1. Watch television channels 4, 9, or 13 for up-to-date information regarding school closure. Rocky Mountain Deaf School will be listed on the captions.

2. Check our website for information regarding school closure.

*Even if we are open, evaluate your decision to bring your child to school based on the road conditions near your house, temperature, etc. Our highest priority is for you to be safe!

We have three additional days built into our calendar, so that we would not have to make up days for closing due to weather. If we have more than 3 snow days, then we may need to revise our original calendar.

Holiday Shop

Thursday, December 8 from 1pm-4:00pm

Friday, December 9 from 1pm-4:00pm

Fun Services is coming to Rocky Mountain Deaf School! Students can shop for holiday gifts at a reasonable price. Gifts will start at .25 cents and go up to \$15.00. Families are also welcome to shop! If you have any questions or would like to volunteer, please contact Gwen at the front desk.

Middle/High School Volleyball Game Schedule

12/1/2011 @ O'Connell Middle School

1275 South Teller Street, Lakewood 80232

12/6/2011 @ Arvada Middle School

5751 Balsam Street, Arvada 80002

12/8/2011 @ West Jefferson Middle School

9449 South Barnes Avenue, Conifer 80433

