

Rocky Mountain Deaf School

IMPORTANT DATES

- Jan 12
Early Years
- Jan 16
No School
MLK Day
- Jan 20
Bug's Life Assembly - Elementary
- Jan 25
Early Release
- Jan 26
RMDS Board Meeting

January 2012



Notes From the Director

As we begin the New Year, we have some exciting things to look forward to at RMDS!

The process to secure property for our new school is continuing and we plan to finalize the purchase of the property before the end of the school year. We will also be working on the design and construction of the new building in 2012!

We have enrolled 15 new students at RMDS this school year, welcoming two new students this month. We have more families who have been in contact with us and are considering placement. We know that our strong academic program and our families sharing their positive experiences with other families are the reasons we continue to grow! Thank you for your support.

Nancy

Bug's Life Assembly

This month the Museum of Nature and Science is visiting RMDS to do as class on bugs! The students will learn the basic anatomy of an insect and the amazing adaptations that help these small creatures survive in the wild.

Friday, January 20th from 2-3pm



Upcoming Dates

February 6-10

Book Fair

February 9

Author's Night

Feb. 15-16

3rd grade

Reading TCAP

Feb. 17-20

Mid-Winter Break

Feb. 29

Early Release

March 21

Parent/Teacher

Conferences

March 26-30

Spring Break

April 2

No School

Book Fair

February 6 – February 10



The annual book fair is just around the corner, and RMDS is gearing up for another week of exploration into the world of reading. Your student will have the opportunity to shop for their favorite authors or discover new books and information. You may also donate books to the classrooms. Proceeds from the event will support RMDS.

Author's Night will be on **Thursday, February 9th from 6-8pm**. Students are the authors and will share their stories and books with friends and family.

You have to opportunity to be the audience for our developing writers and give them some feedback! Don't miss out!

WINTER MIDDLE AND HIGH SCHOOL SPORTS

BASKETBALL

JANUARY 9-MARCH 8



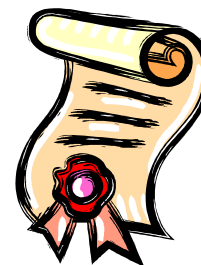
This sports program is open to ALL deaf and hard of hearing students in the Denver Metro area! Practices are held on Mondays and Tuesdays for both boy's and girl's teams. The girl's team will have games on Mondays and Wednesdays and the boy's team will have games on Tuesdays and Thursdays. Games will be played against other Jeffco Schools! Register Today!

Honor Roll Assembly

Monday, January 9, 2012

9:00-9:30 am

Families & friends are invited to join us as we recognize students who have shown high academic achievement during the second quarter of the 2011-2012 school year!



Students with a GPA of 3.5 or above will be honored.

American Sign Language Storytime

The Golden Library will present 30-minute storytimes in American Sign Language. The program is designed for a pre-school audience, but all ages are welcome. An interpreter will be available to translate into spoken English for hearing members of the audience.

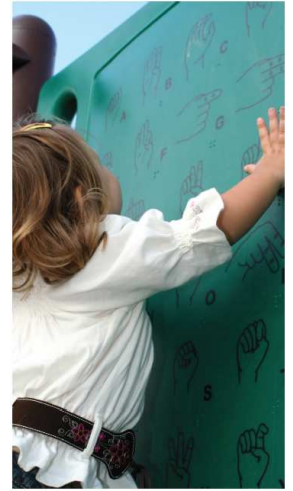
10:30 a.m. Saturdays

Jan. 7
Jan. 21
Feb. 4
Feb. 18
March 3
March 17

American Sign Language interpreters upon request.

Please contact us at least one week in advance:

303-275-6167 or
erin.todd@jeffcolibrary.org



Colorado Gives Day

Rocky Mountain Deaf School is happy to announce that we raised **\$1,526.00** on Colorado Gives day, December 6th, 2011!

Thank you to all our supporters!

Golden Library Survey

The Golden Library and Jefferson County Public Library were awarded a Library Services and Technology Act Grant (LSTA). They are very pleased to be offering services that will enhance the library experience for children and adults with disabilities. Golden Library will be offering ASL story time programs as well as assistive technologies on computers.

An important aspect of the LSTA grant is the evaluation of the project.

Your participation in the survey below will greatly impact the Library's ability to evaluate services to patrons with disabilities. Golden Library Thanks You!

Visit the site below to take the survey:

<http://www.surveymonkey.com/s/HYKDJWS>

Dove Teen Fun Night!

Dove is reaching out to Deaf and Hard of Hearing youth (MS & HS) by hosting events in February! They will be providing fun games/activities like Pictionary, art, and interactive games that will prompt discussions on what constitutes healthy relationships.

WHERE/WHEN? YOU PICK ONE!

Aurora, Wednesday, February 8th 5-7p.m.

Fire Station 14, 22298 E. Aurora Pkwy. RSVP by Fri. 2/3!

Colorado Springs, Wednesday, February 15th 5-7p.m.

Cheyenne Mtn. Library, 1785 S. 8th Street, Ste 100.

RSVP by Fri. 2/10!

Lakewood, Saturday, February 25th 1-3p.m.

Belmar Library, 555 S. Allison Pkwy. Parents are invited to join us for a break-away discussion. RSVP by Weds. 2/22!

RSVP to Avi, Outreach Coordinator:

AVI@DEAFDOVE.ORG or 720-445-4145

*Accommodations available upon request!



Early Years Program



The Early Years Program provides a place for families to come together to build relationships with other families, adults who are Deaf / Hard of Hearing, and professionals. The Early Years Parent Group provides support to families and creates networking opportunities within their community.

January 12, 2012
5:30-7:30pm

Winter Closures

1. Watch television channels 4, 9, or 13 for up-to-date information regarding school closure. Rocky Mountain Deaf School will be listed on the captions.
2. Check our website for information regarding school closure.

***Even if we are open, evaluate your decision to bring your child to school based on the road conditions near your house, temperature, etc. Our highest priority is for you to be safe!**

We have three additional days built into our calendar, so that we would not have to make up days for closing due to weather. If we have more than 3 snow days, then we may need to revise our original calendar.

RMDS ASL CLASSES

Rocky Mountain Deaf School is offering adult and child American Sign Language classes! Register online at www.rmdeafschool.net.

MONDAYS from 6:00pm—7:00pm

Winter Session: January 30- March 12

All Classes will be held simultaneously, so families can come together!

CLASSES

1) Beginning ASL

For new signers

2) ASL second session

For signers with some

ASL knowledge

3) ASL Club for Kids

COST

Individual : \$30

Family: \$20 for each additional member

RMDS Individual:\$15

RMDS Family: \$10 for each additional member